



VILLAGE ESTATES



93 Main Road, Sidcup, Kent DA14 6ND

Tel: 0208 302 1002

www.village-estates.com

Email: sidcup@village-estates.com



TWO BEDROOM TERRACED HOUSE

95FT SOUTH FACING REAR GARDEN

IN NEED OF MODERNISATION

CONVENIENTLY LOCATED FOR SCHOOLS & PARKLAND

OFF ROAD PARKING TO FRONT AND REAR

POTENTIAL TO EXTEND



128 Rowley Avenue
Sidcup, DA15 9LG

**Guide Price £300,000-
£325,000**

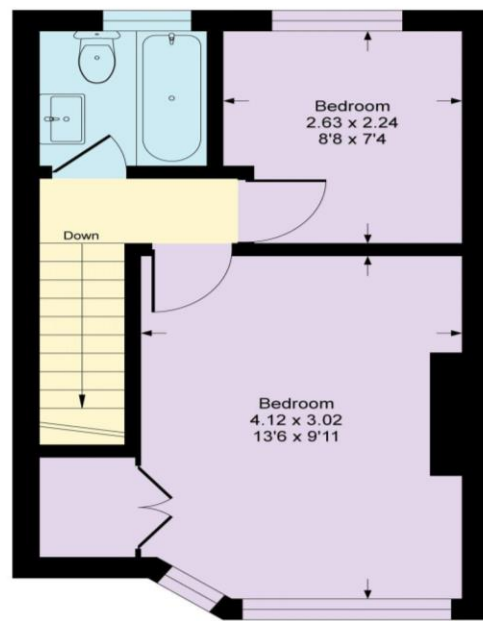
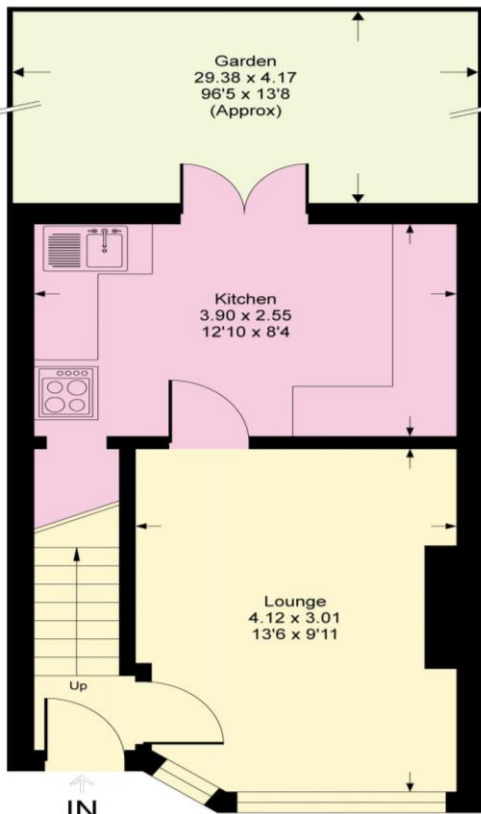
TWO BEDROOM 1930s freehold mid terraced house with OFF STREET PARKING and a 96FT South Facing rear garden. The property is in need of some modernisation and offer further potential to extend. Conveniently located for PRIMARY and SECONDARY SCHOOLS, Blackfen high street shops and easy access to the A2 > M25.

EPC RATING: C

COUNCIL TAX BAND: C

TENURE: Freehold

LEASE TERM: Not Applicable



CONSUMER PROTECTION FROM UNFAIR TRADING REGULATIONS 2008

Please note that any services, heating system or appliances have not been tested, and no warranty can be given or implied as to their working order. You are advised to obtain verification from your solicitor or surveyor. References to the tenure of a property are based on information supplied by the seller. We have not had sight of the title documents and a buyer is advised to obtain verification from their solicitor. Items shown in photographs are not included unless specifically mentioned within the sales particulars, but may be available by separate negotiation. Whilst every attempt has been made to ensure the accuracy of the floor plan contained here, measurements of doors, windows, rooms and any other items are approximate and no responsibility is taken for any error, omission, or mis-statement. We advise you to book an appointment to view before embarking on any journey to see a property, and check its availability. The accuracy of these details are not guaranteed and they do not form part of the contract.